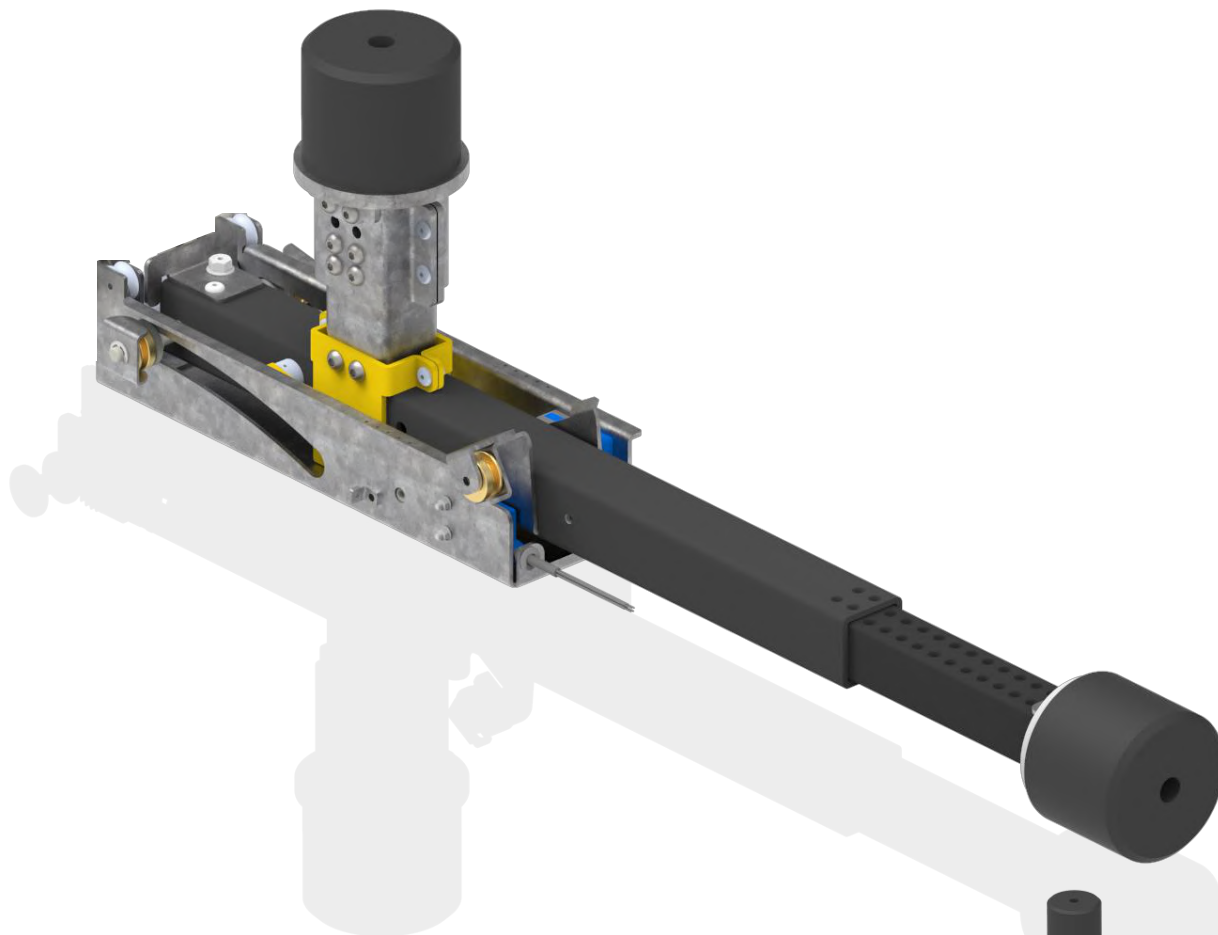


PEDESTAL CANTILEVER



Este sistema ha sido diseñado para proporcionar una solución para ascensores de foso reducido. Puede abrirse y cerrarse fácilmente desde fuera del foso, y cumple con los requisitos de las normas EN81-20 y EN81-21.

Su característico diseño, permite al instalador del ascensor regularlo en altura, colocarlo en diferentes lugares del foso, inclusive entre las guías del contrapeso, necesitando solamente un punto de impacto para el amortiguador durante la operación nominal y de mantenimiento.

This pedestal has been designed to provide a solution for small pit elevators. It can be opened and closed easily from outside the pit and meets with the requirements of the **EN81-21 and EN81-20**.

Its particular design allows the elevator installer to regulate the high, to locate it in different areas of the pit, even between the counterweight guides, and it only requires the elevator to have one area for impact of the buffer during both regular and maintenance operations.



Max. Load at 1m/s:

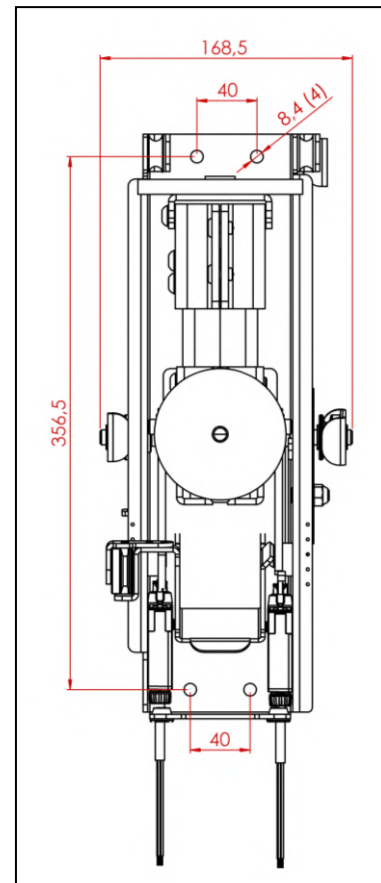
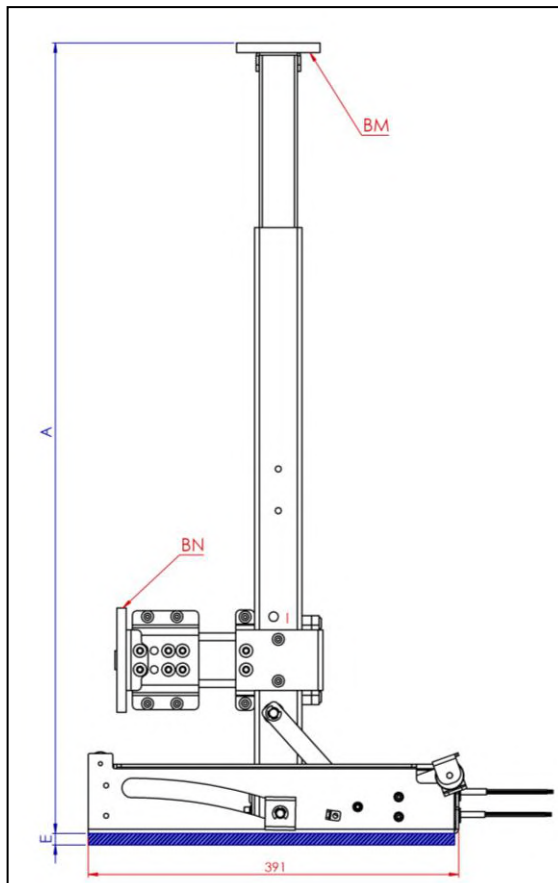
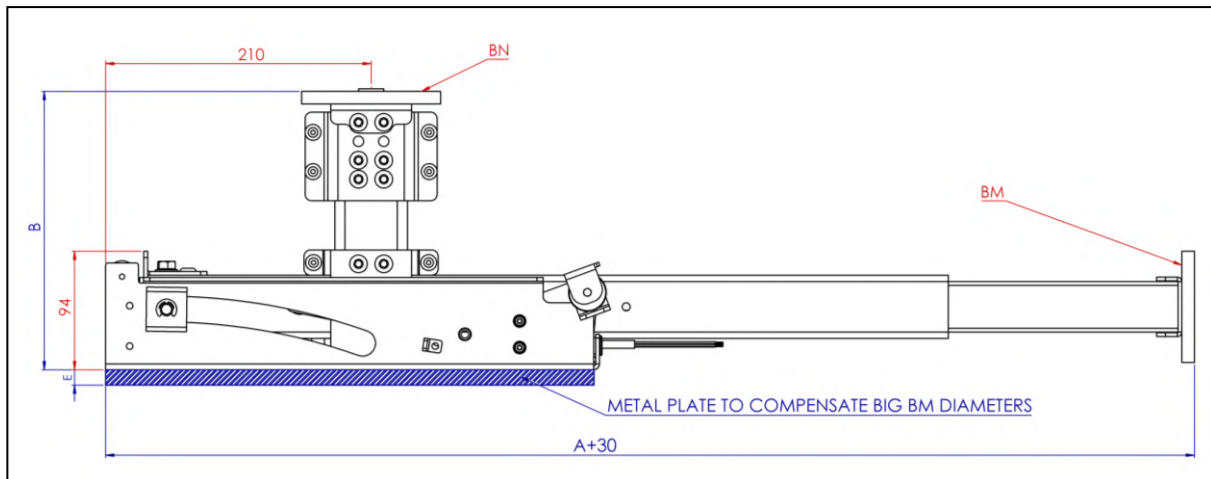
2500 kg

PEDESTAL CANTILEVER

Cómo hacer un pedido /
How to order:

Mod.	B	BM	BN	OP
C100-A	T	3	2	Yes

Mod.	A (mm)	B (mm)	BM/BN	OP	Contact
C100-A	500-665	chart #1	chart #2	Outside opening kit (Yes / No)	2 x 2NC: Schmersal PS116 with roller plunger R200
C100-B	670-1000				



Code	B (mm)
P	75 (No buffer)
Q	85
R	108
S	123-138
T	153-183
U	190-220
V	224-284
W	284-359
X	362-512

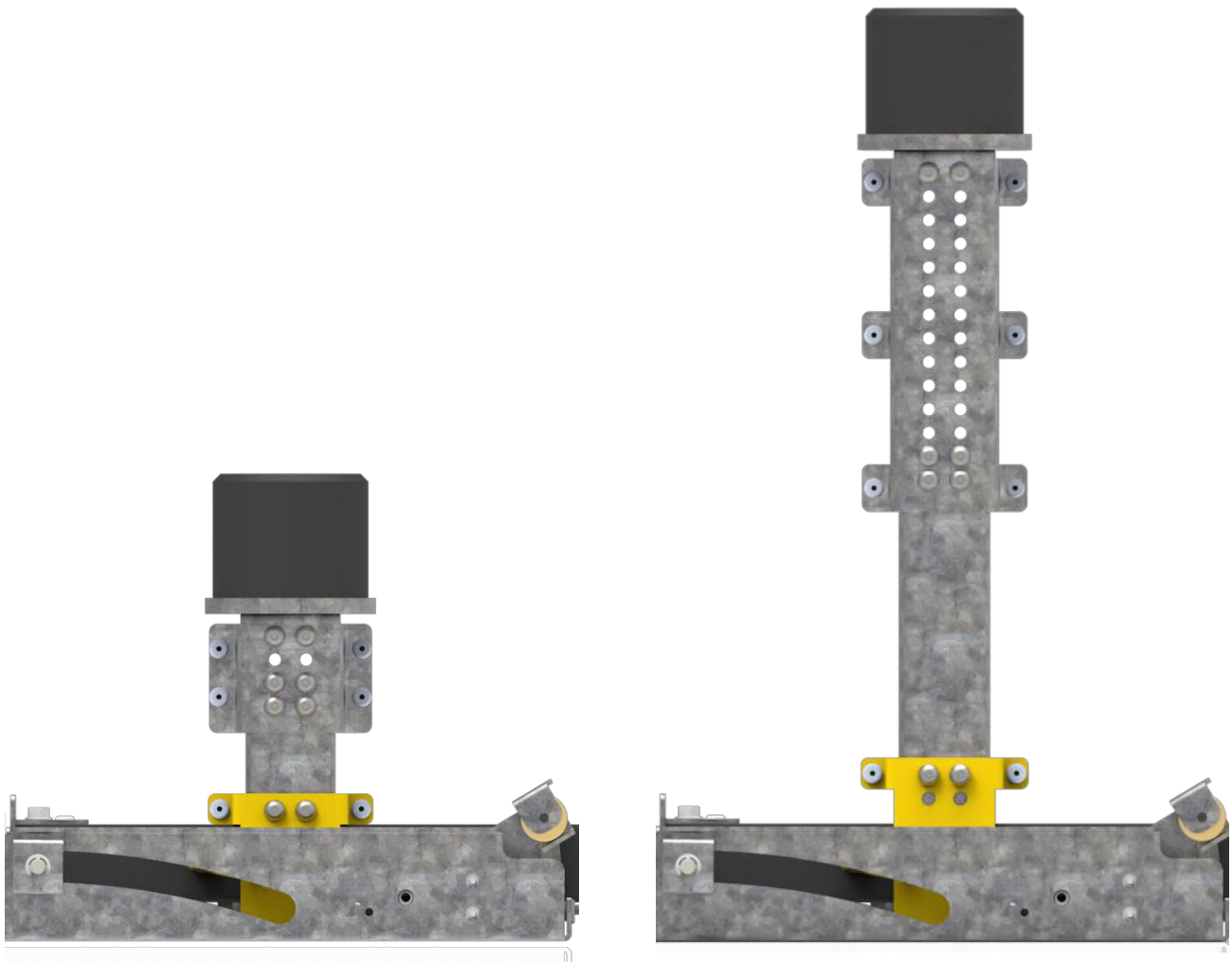
Chart #1

-	∅ Buffer*	H Buffer*	Code to order BM/BN	E (mm)
How to choose the Buffer BASE for Maintenance or Nominal buffers. Como elegir la BASE de Buffer para buffer nominal o de mantenimiento.	none		0	0
	80	80	1	0
	100	80	2	8
	125	80	3	20
	140	80	4	28
	165	80	5	44

Chart #2

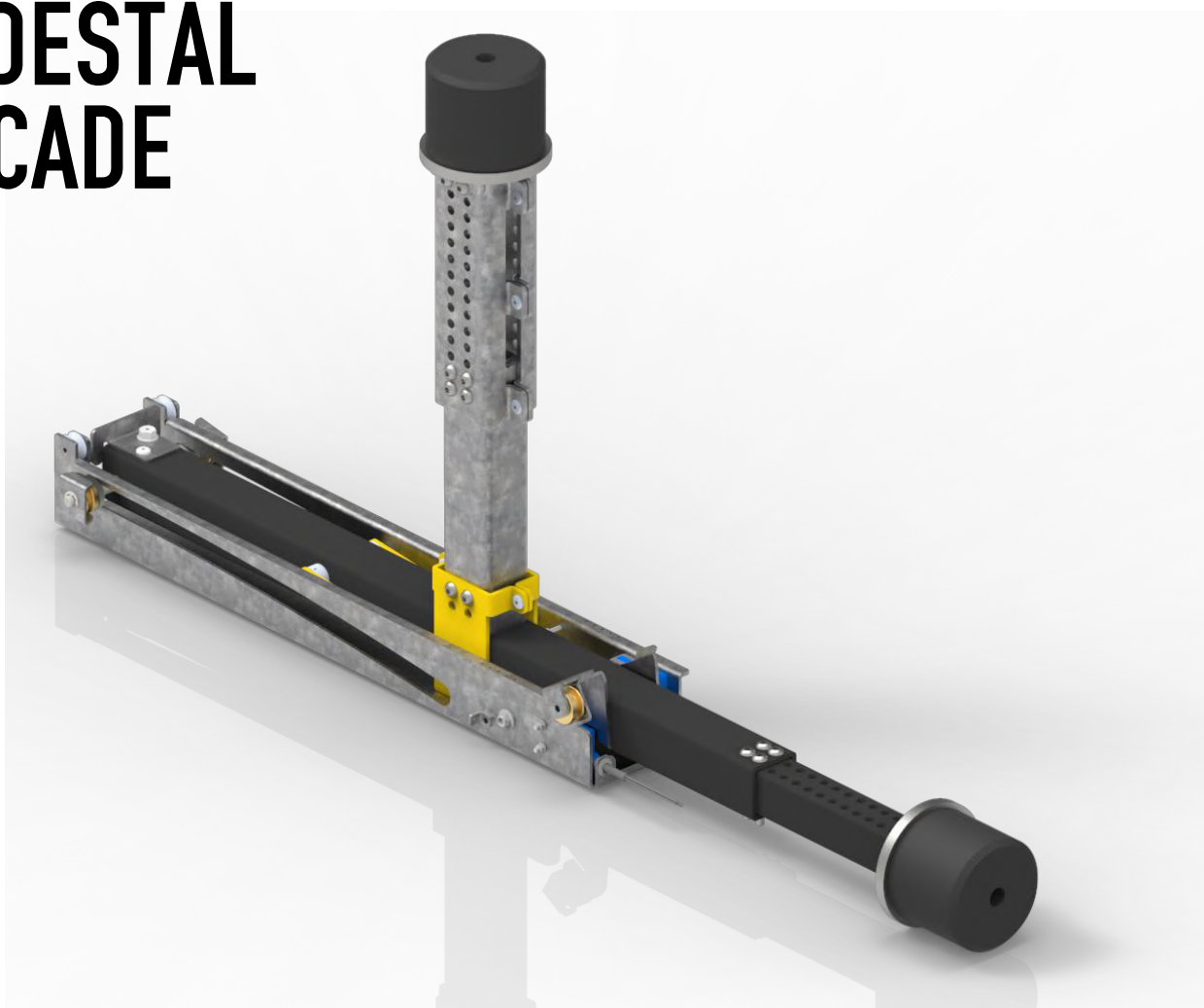
* Medidas de buffer orientativas. Los buffers se venden por separado.

* Buffer measures are indicative. Buffers are sold separately if needed.



Nota/Note: La información proporcionada en este catálogo es no vinculante, y no se debería usar como sustituto de consultas individuales detalladas.
 This catalogue provides non-binding general information, and should not be used as a substitute for a detailed individual consultation.

PEDESTAL ARCADE



Este sistema ha sido diseñado para proporcionar una solución para ascensores de foso reducido. Puede abrirse y cerrarse fácilmente desde fuera del foso, y cumple con los requisitos de las normas EN81-20 y EN81-21.

Su característico diseño, permite al instalador del ascensor regularlo en altura, colocarlo en diferentes lugares del foso, inclusive entre las guías del contrapeso, necesitando solamente un punto de impacto para el amortiguador durante la operación nominal y de mantenimiento.

This pedestal has been designed to provide a solution for small pit elevators. It can be opened and closed easily from outside the pit and meets with the requirements of the **EN81-21 and EN81-20**.

Its particular design allows the elevator installer to regulate the high, to locate it in different areas of the pit, even between the counterweight guides, and it only requires the elevator to have one area for impact of the buffer during both regular and maintenance operations.



Max. Load at 1m/s:

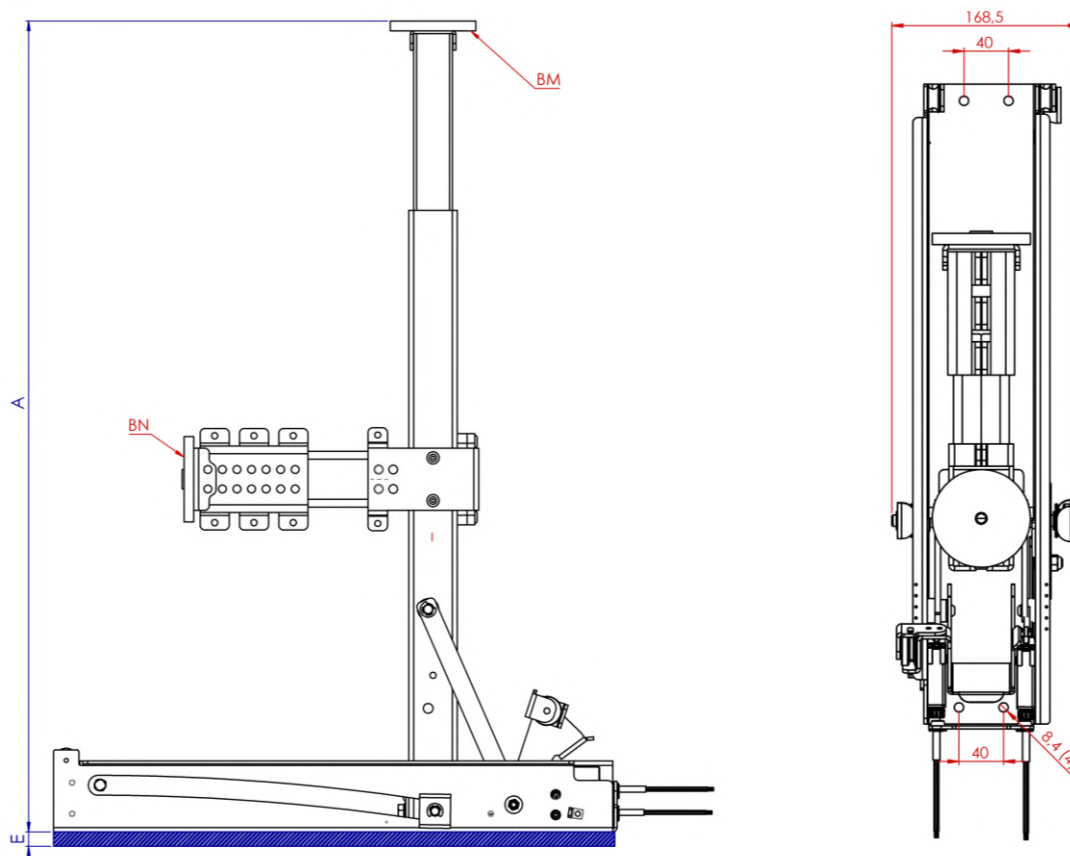
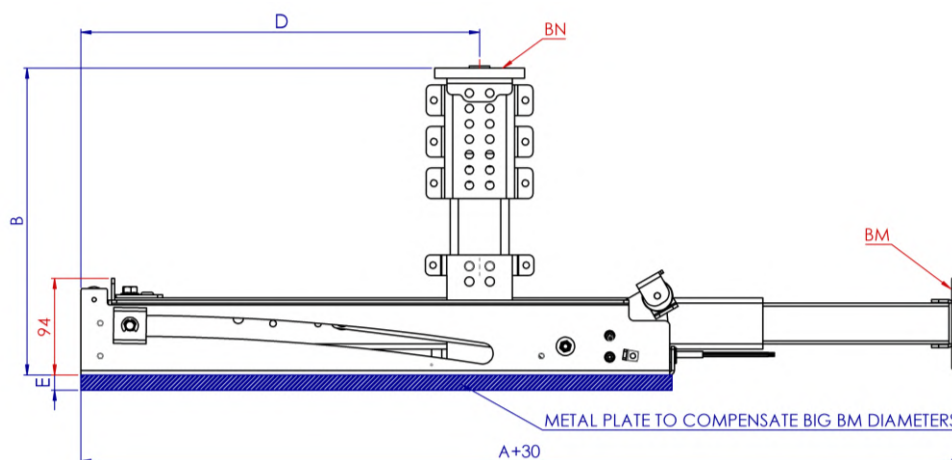
2500 kg

PEDESTAL ARCADE

Cómo hacer un pedido /
How to order:

Mod.	B	BM	BN	OP
A1000	T	3	2	Yes

Mod.	A (mm)	B (mm)	BM/BN	C (mm)	D (mm)	OP	Contact
A715	550-715	chart #1	chart #2	474.5	284	Outside opening kit (Yes / No)	2 x 2NC: Schmersal PS116 with roller plunger R200
A835	670-835			580.5	390		
A1005	840-1005			670	480		



Code	B (mm)
P	75 (No buffer)
Q	85
R	108
S	130-145
T	153-184
U	190-220
V	224-284
W	284-359
X	362-512

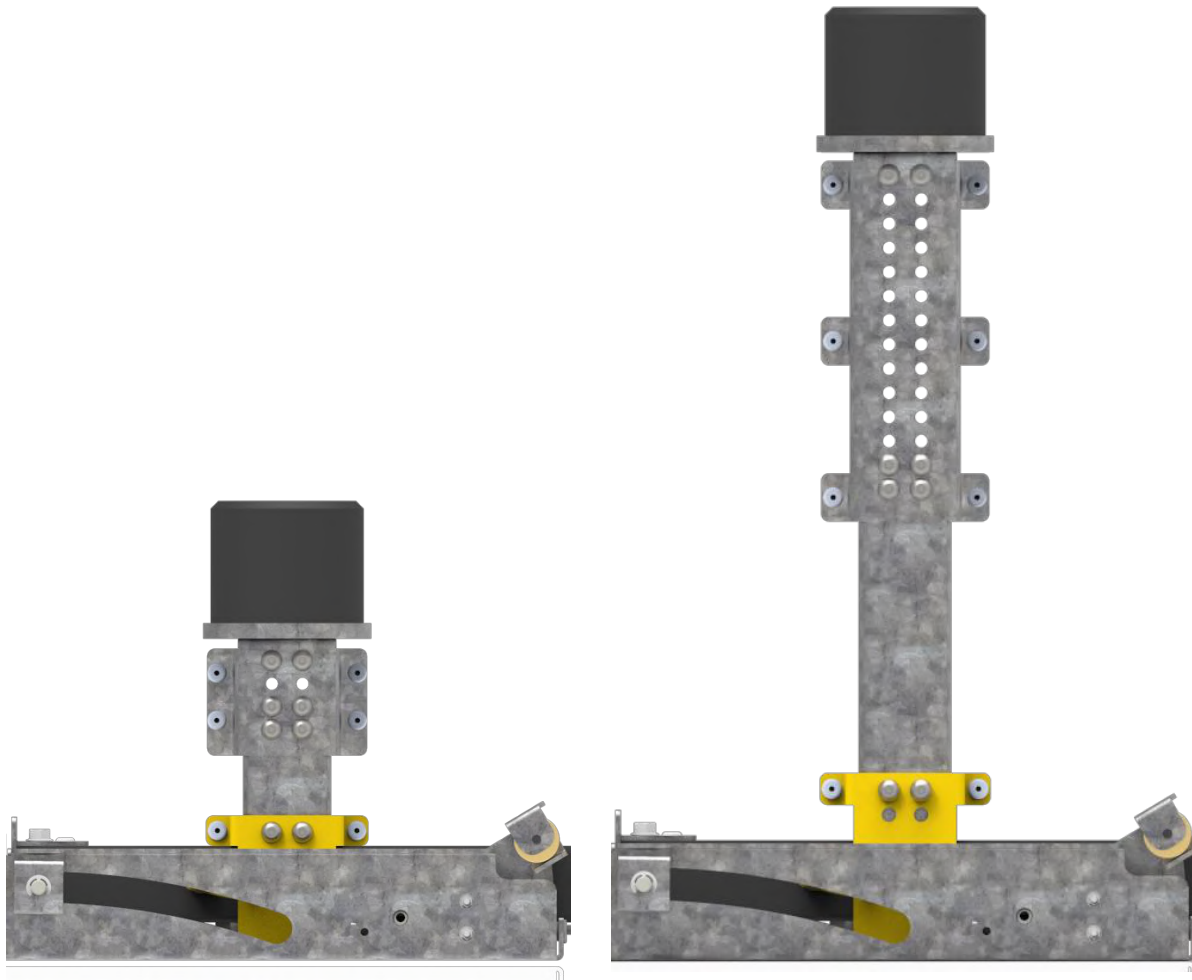
Chart #1

-	Ø Buffer	H Buffer	Code to order BM/BN	E (mm)
How to choose the Buffer BASE for Maintenance or Nominal buffers. Como elegir la BASE de Buffer para buffer nominal o de mantenimiento	none		0	0
	80	80	1	0
	100	80	2	8
	125	80	3	20
	140	80	4	28
	165	80	5	44

Chart #2

* Medidas de buffer orientativas. Los buffers se venden por separado.

* Buffer measures are indicative. Buffers are sold separately if needed.



Nota/Note: La información proporcionada en este catálogo es no vinculante, y no se debería usar como sustituto de consultas individuales detalladas.
 This catalogue provides non-binding general information, and should not be used as a substitute for a detailed individual consultation.